

# Ecoregions of Arkansas

**PRINCIPAL AUTHORS:** Alan J. Woods (Oregon State University), Thomas L. Foti (Arkansas Natural Heritage Commission), Shannen S. Chapman (Dynamac Corporation), James M. Omernik (USEPA, retired), James A. Wise (Arkansas Department of Environmental Quality), Elizabeth O. Murray (Arkansas Multi-Agency Wetland Planning Team), William L. Prior (Arkansas Geological Commission), Joe B. Pagan, Jr. (U.S. Department of Agriculture–Natural Resources Conservation Service), Jeffrey A. Comstock (Indus Corporation), and Michael Radford (Arkansas Soil and Water Conservation Commission).

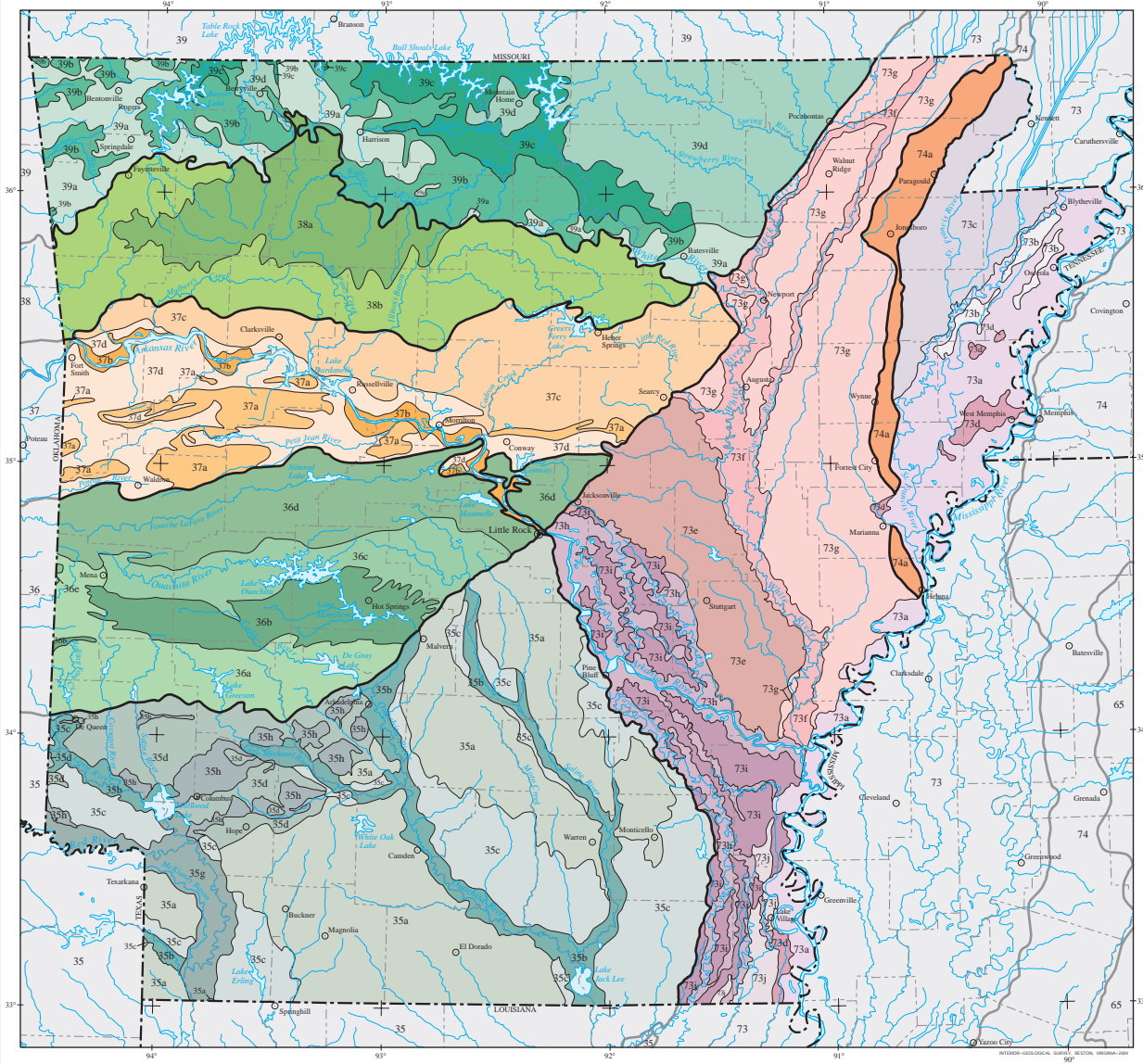
**COLLABORATORS AND CONTRIBUTORS:** Ken Brazil (Arkansas Soil and Water Conservation Commission), Kenneth Colbert (Arkansas Soil and Water Conservation Commission), Philip Crocker (U.S. Environmental Protection Agency), Brian Culpepper (University of Arkansas–Center for Advanced Spatial Technologies), Billy Justus (U.S. Geological Survey), Barbara A. Kleiss (USACE, ERDC–Waterways Experiment Station), Bob Leonard (Arkansas Game and Fish Commission), Thomas R. Loveland (U.S. Geological Survey), Larry Nance (Arkansas Forestry Commission), and Rex Roberg (Arkansas Cooperative Extension Service).

**REVIEWERS:** John Giese (Arkansas Department of Pollution Control and Ecology, retired), Robert J. Lillie (Professor, Department of Geosciences, Oregon State University), and Kenneth Smith (Executive Director, Audubon Arkansas).

**CITING THIS POSTER:** Woods A.J., Foti, T.L., Chapman, S.S., Omernik, J.M., Wise, J.A., Murray, E.O., Prior, W.L., Pagan, J.B., Jr., Comstock, J.A., and Radford, M., 2004, Ecoregions of Arkansas (color poster with map, descriptive text, summary tables, and photographs): Reston, Virginia, U.S. Geological Survey (map scale 1:1,000,000).

This project was partially supported by funds from the USEPA Region 6, Biocriteria Program and USEPA–Office of Science and Technology through a contract with Dynamac Corporation. It was also supported by funds from the Arkansas Soil and Water Conservation Commission through grants provided by the USEPA Region 6 under the provisions of Section 104(b) (3) of the Clean Water Act (through the wetlands grant program).

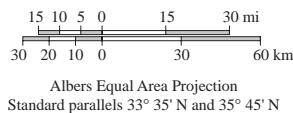
Electronic versions of ecoregion maps and posters as well as other ecoregion resources are available at <http://www.epa.gov/wed/pages/ecoregions/ecoregions.htm>.



- 35 South Central Plains**
  - 35a Tertiary Uplands
  - 35b Floodplains and Low Terraces
  - 35c Pleistocene Fluvial Terraces
  - 35d Cretaceous Dissected Uplands
  - 35g Red River Bottomlands
  - 35h Blackland Prairie
- 36 Ouachita Mountains**
  - 36a Athens Plateau
  - 36b Central Mountain Ranges
  - 36c Central Hills, Ridges, and Valleys
  - 36d Fourche Mountains
  - 36e Western Ouachitas
- 37 Arkansas Valley**
  - 37a Scattered High Ridges and Mountains
  - 37b Arkansas River Floodplain
  - 37c Arkansas Valley Hills
  - 37d Arkansas Valley Plains

- 38 Boston Mountains**
  - 38a Upper Boston Mountains
  - 38b Lower Boston Mountains
- 39 Ozark Highlands**
  - 39a Springfield Plateau
  - 39b Dissected Springfield Plateau–Elk River Hills
  - 39c White River Hills
  - 39d Central Plateau

- 73 Mississippi Alluvial Plain**
  - 73a Northern Holocene Meander Belts
  - 73b Northern Pleistocene Valley Trains
  - 73c St. Francis Lowlands
  - 73d Northern Backswamps
  - 73e Grand Prairie
  - 73f Western Lowlands Holocene Meander Belts
  - 73g Western Lowlands Pleistocene Valley Trains
  - 73h Arkansas/Ouachita River Holocene Meander Belts
  - 73i Arkansas/Ouachita River Backswamps
  - 73j Macon Ridge
- 74 Mississippi Valley Loess Plains**
  - 74a Bluff Hills



- Level III ecoregion
- Level IV ecoregion
- County boundary
- State boundary