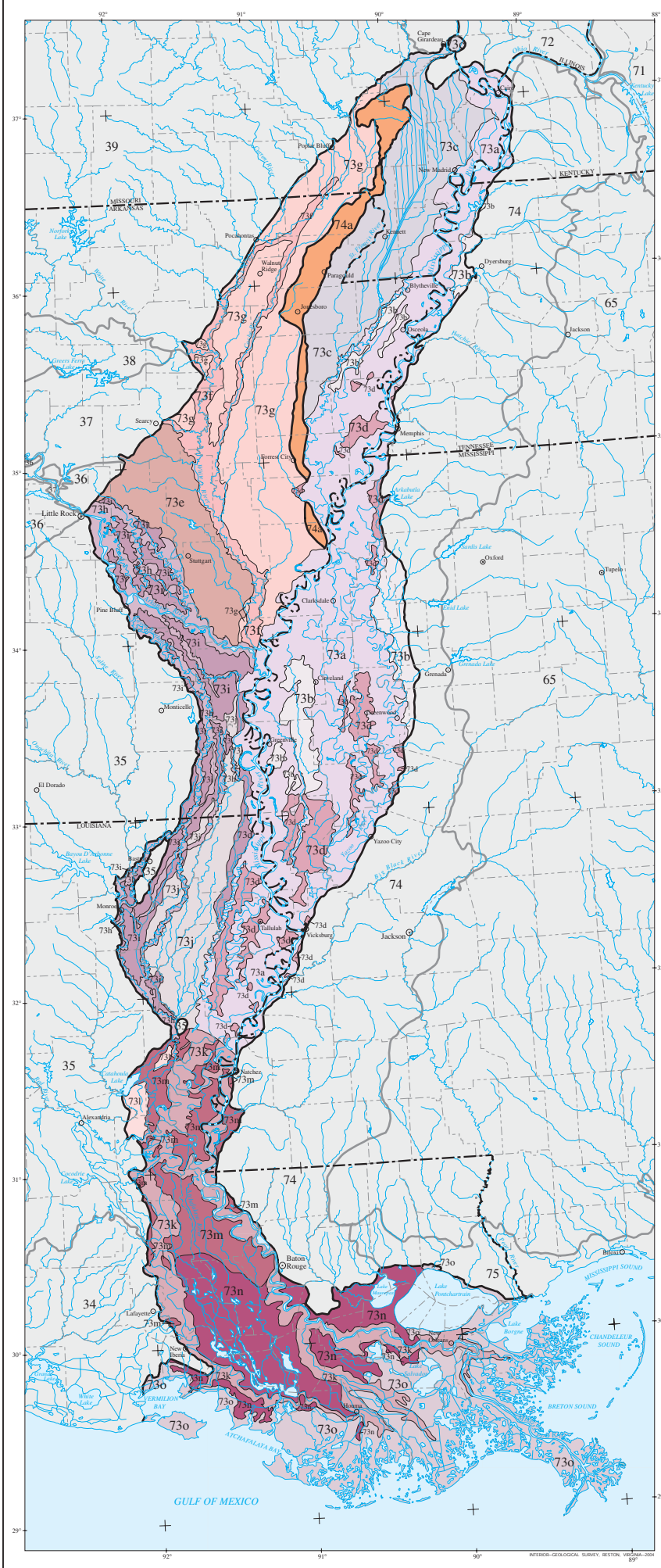
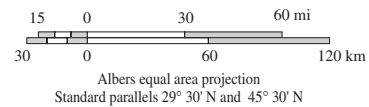


Ecoregions of the Mississippi Alluvial Plain



- 73 Mississippi Alluvial Plain**
- 73a Northern Holocene Meander Belts
 - 73b Northern Pleistocene Valley Trains
 - 73c St. Francis Lowlands
 - 73d Northern Backswamps
 - 73e Grand Prairie
 - 73f Western Lowlands Holocene Meander Belts
 - 73g Western Lowlands Pleistocene Valley Trains
 - 73h Arkansas/Ouachita River Holocene Meander Belts
 - 73i Arkansas/Ouachita River Backswamps
 - 73j Macon Ridge
 - 73k Southern Holocene Meander Belts
 - 73l Southern Pleistocene Valley Trains
 - 73m Southern Backswamps
 - 73n Inland Swamps
 - 73o Coastal Marshes
- 74 Mississippi Valley Loess Plains**
- 74a Bluff Hills

- Level III ecoregion
- Level IV ecoregion
- - - State Boundary
- - - County Boundary



PRINCIPAL AUTHORS: Shannen S. Chapman (Dynamac Corporation), Barbara A. Kleiss (USACE, ERDC -Waterways Experiment Station), James M. Omernik, (USEPA, retired), Thomas L. Foti (Arkansas Natural Heritage Commission), and Elizabeth O. Murray (Arkansas Multi-Agency Wetland Planning Team).

COLLABORATORS AND CONTRIBUTORS: Lawrence R. Handley (USGS), Jerry J. Daigle (NRCS), Delaney Johnson (NRCS), Michael E. Lilly (NRCS), Alan J. Woods (Department of Geosciences, Oregon State University), Glenn E. Griffith (Dynamac Corporation), Daniel J. Twedt (USGS), Michael Beiser (Mississippi DEQ), Michael Bograd (Mississippi DEQ), Ken Brazil (Arkansas DEQ), and Jeffrey Comstock (Indus Corporation).

REVIEWERS: Charles Klimas (consulting ecologist c/o USACE, ERDC-Waterways Experiment Station), Robert Delaney (USGS), and Leigh Fredrickson (USGS Northern Prairie Wildlife Research Center).

CITING THIS POSTER: Chapman, S.S., Kleiss, B.A., Omernik, J.M., Foti, T.L., and Murray, E.O., 2004, Ecoregions of the Mississippi Alluvial Plain (color poster with map, descriptive text, summary tables, and photographs): Reston, Virginia, U.S. Geological Survey (map scale 1:1,150,000).