

Ecoregions of Wyoming

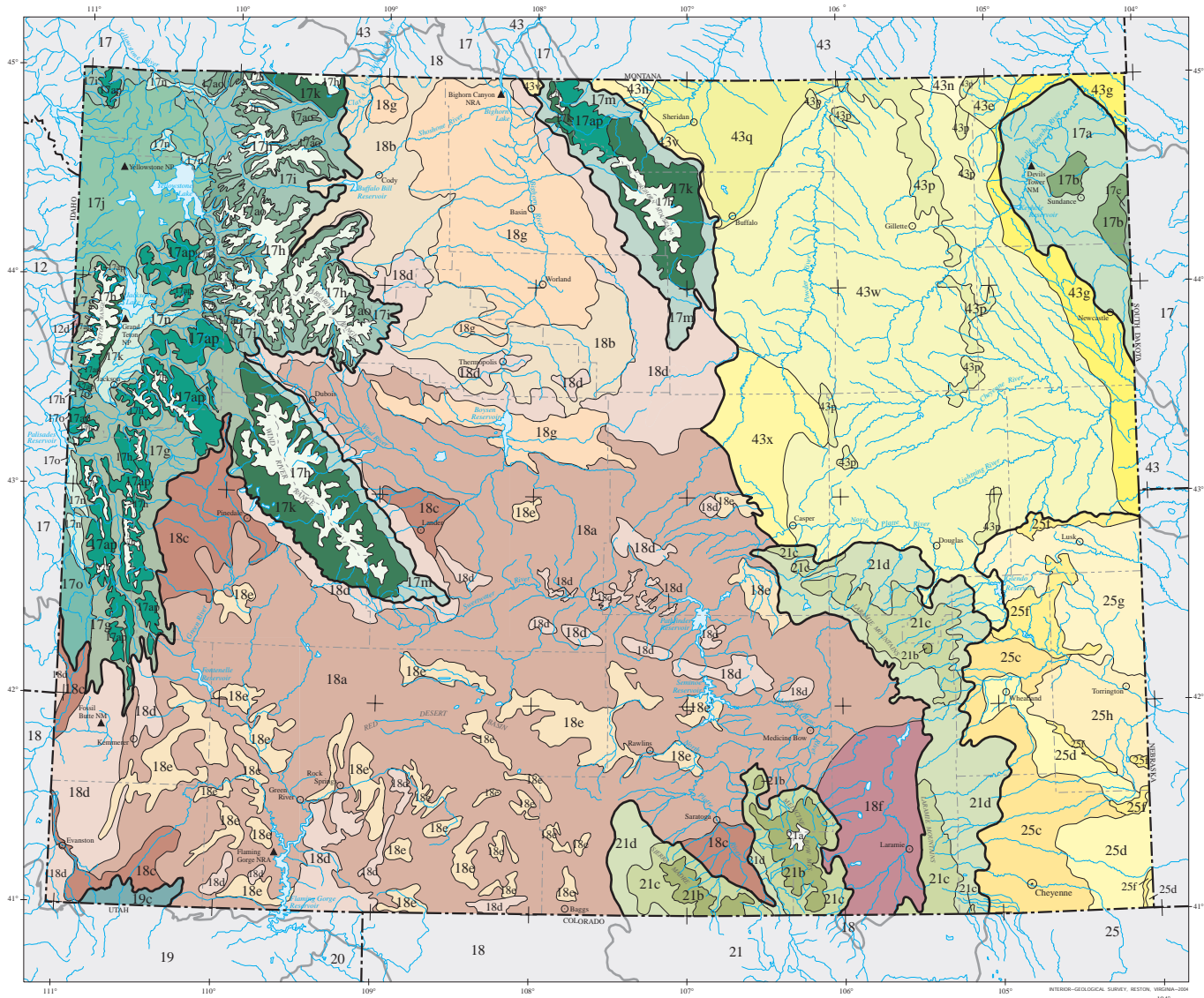
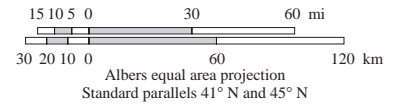
PRINCIPAL AUTHORS: Shannen S. Chapman (Dynamac Corporation), Sandra A. Bryce (Dynamac Corporation), James M. Omernik (USEPA, retired), Donald G. Despain (USGS), Jeremy ZumBerge (WDEQ), and Mark Conrad (WDEQ).

COLLABORATORS AND CONTRIBUTORS: Dennis Knight (University of Wyoming), Tony Selle (USEPA), Jack Smith (WDEQ), Darrell Schroeder (NRCS), Bill Daniels (BLM), Tom Enright (BLM), Jerry Freeouf (USFS), and Jeffrey Comstock (Indus Corporation).

REVIEWERS: Kurt King (WDEQ) and Myron Brooks (USGS, Wyoming).

CITING THIS POSTER: Chapman, S.S., Bryce, S.A., Omernik, J.M., Despain, D.G., ZumBerge, J., and Conrad, M., 2004, Ecoregions of Wyoming (color poster with map, descriptive text, summary tables, and photographs): Reston, Virginia, U.S. Geological Survey (map scale 1:1,400,000).

— Level III ecoregion
 --- Level IV ecoregion
 - - - County boundary
 - - - State boundary



- | | | |
|--|---|--|
| <p>12 Snake River Plain</p> <ul style="list-style-type: none"> 12d Dissected Plateaus Teton Basin <p>17 Middle Rockies</p> <ul style="list-style-type: none"> 17a Black Hills Foothills 17b Black Hills Plateau 17c Black Hills Core Highlands 17g Mid-Elevation Sedimentary Mountains 17h Alpine Zone 17i Absaroka-Gallatin Volcanic Mountains 17j Yellowstone Plateau 17k Granitic Subalpine Zone 17m Dry Mid-Elevation Sedimentary Mountains 17n High Elevation Valleys 17o Partly Forested Mountains 17ao Absaroka Volcanic Subalpine Zone 17ap Sedimentary Subalpine Zone | <p>18 Wyoming Basin</p> <ul style="list-style-type: none"> 18a Rolling Sagebrush Steppe 18b Bighorn Basin 18c Sub-Irrigated High Valleys 18d Foothill Shrublands and Low Mountains 18e Salt Desert Shrub Basins 18f Laramie Basin 18g Bighorn Salt Desert Shrub Basins <p>19 Wasatch and Uinta Mountains</p> <ul style="list-style-type: none"> 19c Mid-Elevation Uinta Mountains <p>21 Southern Rockies</p> <ul style="list-style-type: none"> 21a Alpine Zone 21b Subalpine Forests 21c Mid-Elevation Forests and Shrublands 21d Foothill Shrublands | <p>25 High Plains</p> <ul style="list-style-type: none"> 25c Moderate Relief Rangeland 25d Flat to Rolling Cropland 25f Pine Bluffs and Hills 25g Sandy and Silty Tablelands 25h Platte River Valley and Terraces <p>43 Northwestern Great Plains</p> <ul style="list-style-type: none"> 43c Sagebrush Steppe 43g Semiarid Pierre Shale Plains 43n Montana Central Grasslands 43p Pine Scoria Hills 43q Mesic Dissected Plains 43v Pryor-Bighorn Foothills 43w Powder River Basin 43x Casper Arch |
|--|---|--|